

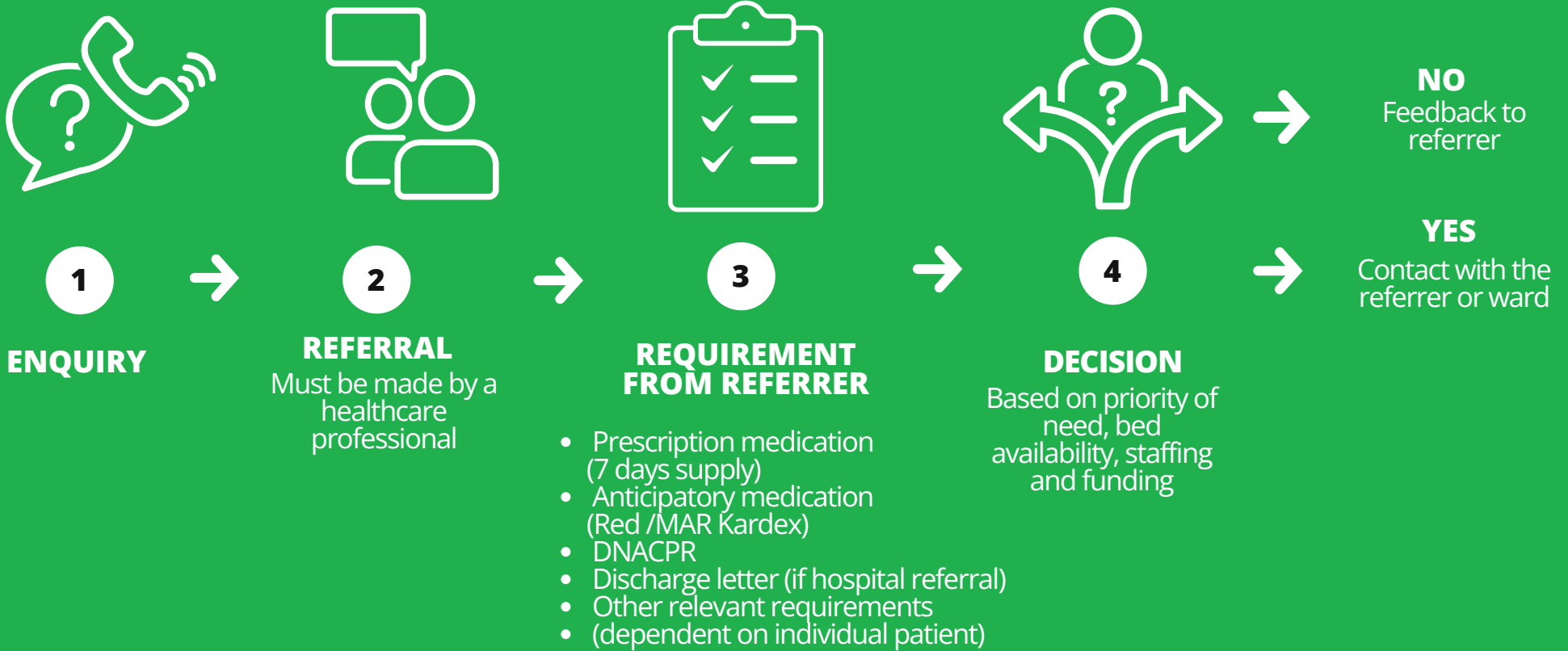
Referral Route

HELEN MCARDLE IN-PATIENT WING

Willow Burn Hospice is an independent charity.

Our In Patient Unit has 6 beds – (4 of which are contracted to the NENC Integrated Care Board) for short-stay provision of:
End of Life Care, Symptom Control, Crisis Intervention.

Willow Burn is a Nurse led unit.



01207 529 224